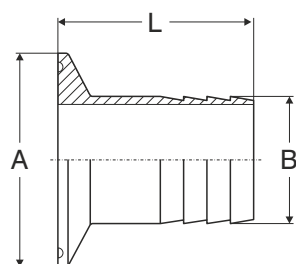
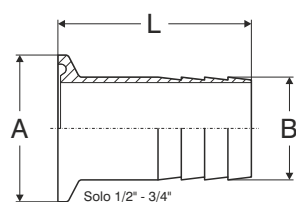


# PORTAGOMMA CLAMP BS

DN inch.	A mm	B mm	L mm
1/2"	25,4	13,7	38
3/4"	25,4	19,05	38
1"	50,5	25,4	43
1"1/2	50,5	38,1	43
2"	64	50,8	58
2"1/2	77,5	63,5	59
3"	91	76,2	78
4"	119	101,6	86



**⚠ ATTENZIONE!!!**

Le caratteristiche tecniche sopra riportate sono puramente indicative e possono subire variazioni da lotto a lotto.